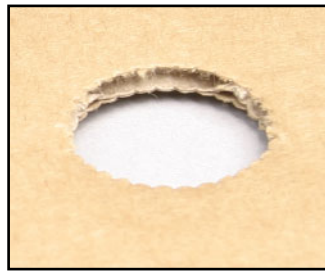


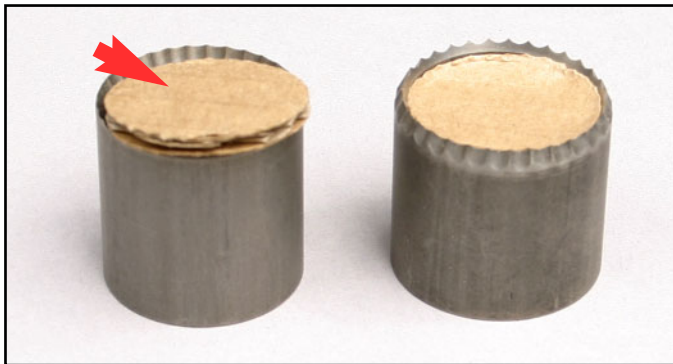
New Inside-Inside Serrated Punches produce a cleaner cut with less pressure!



Actual cut with a Wagner Inside-Inside Bevel Serrated Punch. Note the clean edge cut with minimal tearing and board crush.



Actual cut with a Standard Center Bevel Serrated Punch.



Cuts were made into corrugated using no ejection material, notice the Wagner Inside-Inside Bevel Serrated on the left - the waste does not stay inside the punch, as it does in the conventional outside bevel and center bevel punch as shown on the right.

Wagner's NEW Inside-Inside Bevel Serrated Punches - provide a cleaner cut, with less pressure reducing board crush and ejects cleanly using less ejection material!

Available in 1" high in the following diameter cut sizes:

3/8", 1/2", 5/8", 3/4", 1", 1-1/8" and 1-1/4"

Other sizes and heights available upon request.



- 10-tooth design
- Shallow, .011" gullet
- Produces a ridge-free cut with less pressure due to its unique serration configuration
- Reduces damage to anvil covers
- Performs consistently with less ejection material for superior waste removal
- Excellent for cutting corrugated plastic

Wagner Die Supply®
Diemaking & Diecutting Source & Resource

West

2041 Elm Court
Ontario, CA 91761
(909) 947-3044
Fax: (909) 923-7809

Southwest

2532 Converse Street
Dallas, TX 75207
(214) 630-4695
Fax: (214) 630-5425

Midwest

960 Industrial Drive
Elmhurst, IL 60126
(630) 782-6230
Fax: (630) 782-6220

www.wagnerdiesupply.com