



Rotary Die Room Supplies & Equipment

High speed rotary diecutting demands high precision components and specialized products. Wagner is on the forefront of rotary diecutting technology. We carry products from top manufacturers and back them with the industry's best customer service and support.

Kushion Crease



Kushion Crease - Extruded profiles designed to minimize score fractures on corrugated board. Color-coded edges for easy profile height identification. Available in sizes from .225" (5.7mm) to .375" (9.5mm).

Shore A Hardness: 70 ± 3

Packaged in 164' (50 meter) coils.

Kushion Crease Thickness Chart

	Profile - Edge color	Thickness - Inch	Thickness - mm
Grey		0.225	5.7
Yellow		0.260	6.5
Green		0.280	7.0
Gold		0.300	7.5
Blue		0.315	8.0
Purple		0.335	8.5
Orange		0.355	9.0
White		0.375	9.5

Rule Guards



Rule Guards - these guards help protect rule and maintain alignment of rotary dies. 2 guards per set with mounting screws.

More rotary supplies next page!



2041 Elm Court, Ontario, CA 91761
Local: 909-947-3044 • Fax: 909-923-7809



827 S. Great S'west Pkwy., Grand Prairie, TX 75051
Local: 214-630-4695 • Fax: 214-630-5425



960 Industrial Drive, Elmhurst, IL 60126
Local: 630-782-6230 • Fax: 630-782-6220

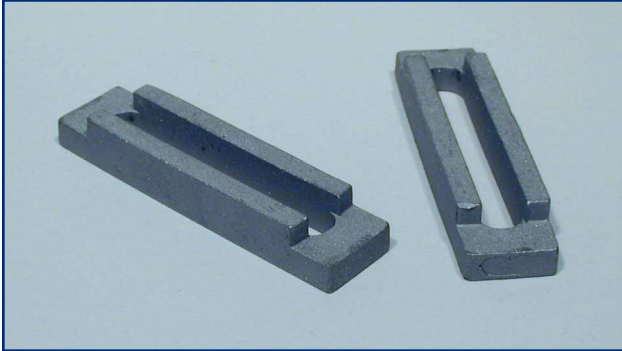
800-423-4478 TOLL-FREE ALL LOCATIONS!

www.wagnerdiesupply.com
sales@wagnerdiesupply.com



Rotary Diroom Supplies (continued)

4-Way Hardware



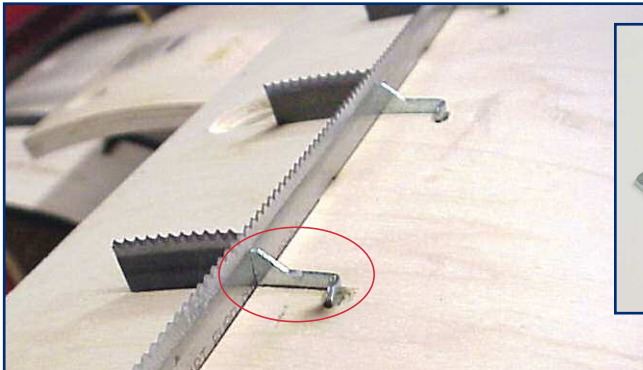
Four-Way Hardware - adjustable slot for 2" to 3" hole spacing, 1/4" and 5/16" widths available.

Speed Mount



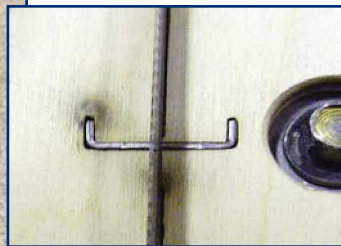
Speed Mount Washers - a wide variety of slot sizes, exclusively for rotary applications. Call or e-mail for a complete range of available sizes.

LeGard



LeGard - Lead edge knife brace for rotary dies, reduces lead knife failure. Easy to install and durable.

Bridge Savers



Bridge Saver - was developed as a simple and effective way to increase board strength on rotary dies. Simple to install, Bridge Savers increase support to the dieboard in critical areas. Adding Bridge Savers to the rule near the join, greatly enhances rule grip, extending the life and performance of rotary dies.

More rotary supplies next page!



2041 Elm Court, Ontario, CA 91761
 Local: 909-947-3044 • Fax: 909-923-7809



827 S. Great S'west Pkwy., Grand Prairie, TX 75051
 Local: 214-630-4695 • Fax: 214-630-5425



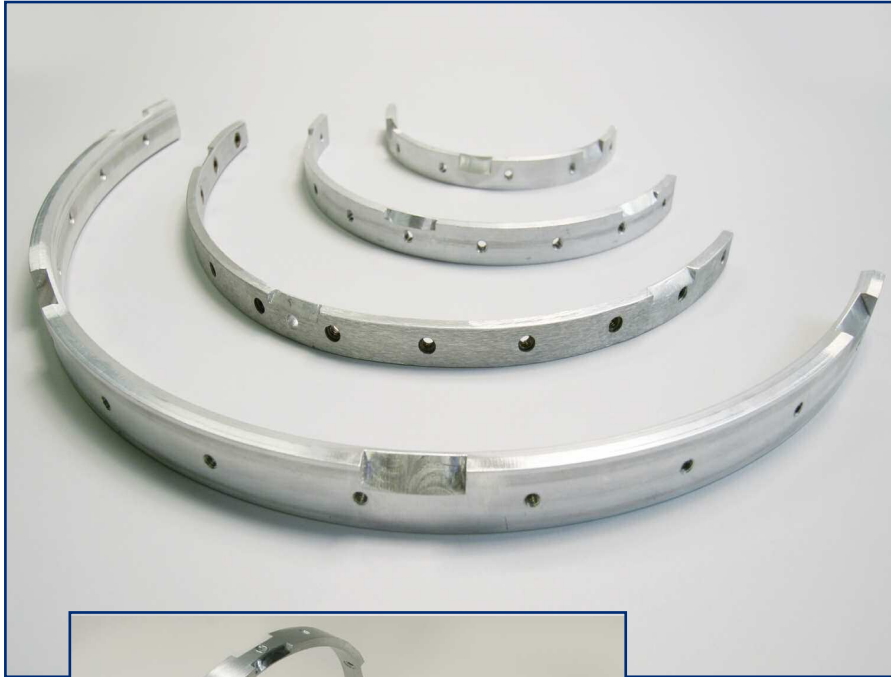
960 Industrial Drive, Elmhurst, IL 60126
 Local: 630-782-6230 • Fax: 630-782-6220

800-423-4478 TOLL-FREE ALL LOCATIONS!

www.wagnerdiesupply.com
sales@wagnerdiesupply.com



Precision Rotary Hoops for Posi-lock[®] Mounting Systems!



These **Precision Rotary Hoops** feature exact hole alignment with nut inserts and precise chamfers for accurate fit.

Four Sizes Available for all FFG / DRO models with Posi-lock[®]

Martin [®] Model Series	Hoop Size
618	177mm
924	270mm
1228-32	366mm
1624-36	487mm



Double Groove units are also available in the same sizes.



Wagner Precision Rotary Hoops feature exact hole alignment with nut inserts for accurate and reliable fit.

Wagner also supplies Die Storage Units specifically designed for DRO Dies!

Click below:

<http://www.wagnerdiesupply.com/DRO-EVOLstorage.html>

More rotary supplies next page!

W West

2041 Elm Court, Ontario, CA 91761
 Local: 909-947-3044 • Fax: 909-923-7809

W Southwest

827 S. Great S'west Pkwy., Grand Prairie, TX 75051
 Local: 214-630-4695 • Fax: 214-630-5425

W Midwest

960 Industrial Drive, Elmhurst, IL 60126
 Local: 630-782-6230 • Fax: 630-782-6220

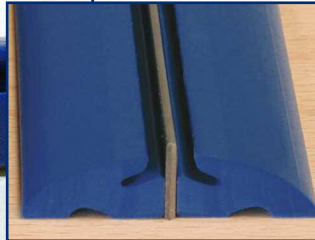
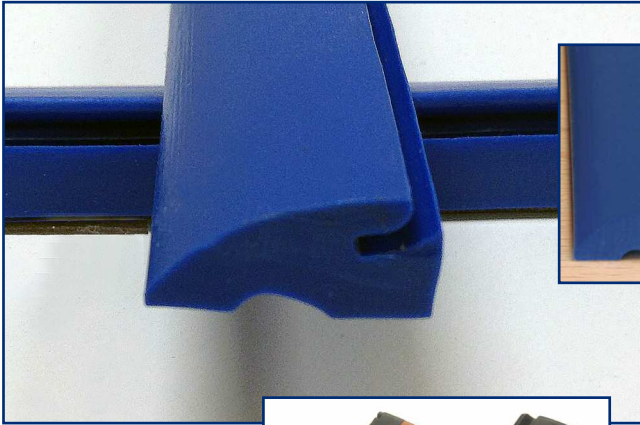
800-423-4478 TOLL-FREE ALL LOCATIONS!

www.wagnerdiesupply.com
sales@wagnerdiesupply.com



Rotary Diroom Supplies *(continued)*

Shoulder Flex 2



Shoulder Flex 2 - surface mounted, helps corrugated from cracking during the scoring process.

.350 - Blue

.375 - Orange

Available in 50' and 300' coils.

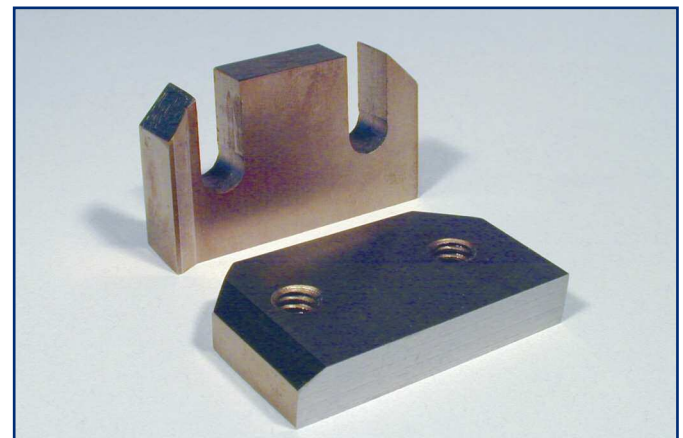
Air Tacker - excellent for installing Shoulder Flex and aluminum stripper and score.

Curver / Flattener Tool



Curver / Flattener Tool - for use on rotary rule, works on Helmod Bendall Bender, for curving and flattening.

Rotary Miter Knives



Rotary Miter Knives - install easily onto 1-1/2" model Helmod Cutter for mitering rotary rule.

West

2041 Elm Court, Ontario, CA 91761
 Local: 909-947-3044 • Fax: 909-923-7809

Southwest

827 S. Great S'west Pkwy., Grand Prairie, TX 75051
 Local: 214-630-4695 • Fax: 214-630-5425

Midwest

960 Industrial Drive, Elmhurst, IL 60126
 Local: 630-782-6230 • Fax: 630-782-6220

800-423-4478 TOLL-FREE ALL LOCATIONS!

www.wagnerdiesupply.com
sales@wagnerdiesupply.com